

# Schäffer Lader

***THE PERFORMANCE CLASS***

**450 T | 670 T | 690 T**

**900 T | 930 T | 980 T**



**TELESCOPIC LOADERS:  
Performance re-defined**

## YARD LOADERS, WHEEL LOADERS AND TELESCOPIC LOADERS ...

from 14 kW (20 HP) to 115 kW (156 HP). We have been developing loaders for individual requirements for almost 50 years. The satisfaction of our customers has made us what we are today: one of the most competitive and most successful suppliers of yard loaders, wheel loaders and telescopic loaders. Every day our employees create new, custom solutions. Every SCHÄFFER LOADER is the result of a synthesis between many years of experience and an innovative development spirit. Our products set standards in terms of maximum reliability and durability. With lower costs throughout the entire service life. With even more performance, safety and comfort for years to come.

*made by SCHÄFFER*



# Schäffer Lader

When it comes to articulated telescopic loaders, SCHÄFFER machines are the most successful in their class. Precision performance on any terrain, with lifting heights and loads that you will not find in comparable machines from our competitors. The compact design, which is characteristic of all SCHÄFFER LOADERS, makes them a joy to use especially in hard-to-reach areas. Also due to the user-friendly controls, of course. The famous reliability of all SCHÄFFER LOADERS is also built-in. And not least of all: they look good, as well.

## **SCHÄFFER TELESCOPIC LOADERS: THE FUTURE OF PERFORMANCE.**

### ***THE PERFORMANCE CLASS***

<b>450 T</b>		<b>36 kW (50 HP)</b>
<b>450 TS</b>		<b>45 kW (60 HP)</b>
<b>670 T</b>		<b>54 kW (75 HP)</b>
<b>690 T</b>		<b>65 kW (90 HP)</b>
<b>900 T</b>		<b>75 kW (102 HP)</b>
<b>930 T</b>		<b>95 kW (130 HP)</b>
<b>980 T</b>		<b>115 kW (156 HP)</b>





It is also natural to find all modern SCHÄFFER technology in this series. Due to the low coupling of the loading arm and the new designed hood the driver gets an unsurpassed and excellent all round view. The rear axle is freely suspended which greatly increases the stability and durability of the machine. An audio-visual warning system points out if the load is getting too high. With engines of 54 kW/75 hp or 65 kW/90 hp the SCHÄFFER 600s are more than adequate for the most demanding situations.

Schäffer 670 t and 690 t: The state of the art telescoping loaders.

## TELESCOPING LOADERS 670 T/690 T: COMPACT MACHINES WITH EXCELLENT ALL ROUND VIEW

The new articulated telescoping loaders with an operating weight of 5 t covers at SCHÄFFER the middle segment in telescoping loaders range. Unique selling points of these models are agility, suitability also for use in hard to reach areas and compact machine measurements. Just in case bigger SCHÄFFER loaders of the 900s series are out of question due to their dimensions, the 600s come up to with their advantages. These machines are dedicated for use in narrow conditions, e.g. for use "under roof".



Full floating axle in rear for more stability.



The articulation joint is very strong and close to unbreakable. It gives high agility.



Models 450 T / TS make the SCHÄFFER range of telescoping loaders complete. The operating weight of the machines is 4 t. Again and again these machines were improved in details and already for a long time on duty. The total height at the cabin amounts to 2.210 mm only, the minimal machine width is 1,270 mm. Despite the compact machine measurements lifting height is 4.040 mm.

The new water-cooled BF 4 M 2012 4-cylinder engines from Deutz. You can be sure that the engines are extremely reliable even under difficult conditions. The technical data is convincing: one litre displacement per cylinder, excellent torque increase, specific fuel consumption of approximately 200 g/kWh, quiet and clean.





Clear view due to low swing coupling.



Full floating axle in rear for more stability and higher excavating force.



Transport speed up to 35 km/h.

## TELESCOPIC LOADER 900 T / 930 T FROM SCHÄFFER: THE LOADER WITH ADDED VALUE

Here are only four features that make these loaders added-value machines:

1. The driver has an excellent all-round view due to the low swing coupling and a new design for the engine bonnet. The driver can always see clearly in all directions.
2. The lifting height of 5.25 meters is unique in the 6-ton class. With SCHÄFFER you can reach higher and farther.
3. The full floating rear axle contributes to the excellent stability of the loader. Good for your safety and for use on rough terrain.
4. The tool cylinder is protected within the telescoping arm, which also protects your pocketbook on the long run.

The 900 T/930 is our most popular telescopic loader. And for more than just four reasons.



## THE DRIVER REMAINS ALERT

User-friendly control elements, such as the adjustable steering column or the one-hand joystick control, make your job easier and more fun. The working hydraulics, due to proportional technology, can be dosed very precisely even under large loads. This provides tremendous relief for the driver. In the large and quiet cab of the 980 T, you will remain alert longer, for increased safety and productivity.





## TELESCOPIC LOADER 980 T: SAFETY AND POWER

Safety and productivity were the highest priorities in the development of the 980 T. Despite the operating weight of 8.3 tons, this machine is compact and quite manoeuvrable. The inside track arc is only 1.70 meters! Enjoy the feeling of safety from the wide tyres and the full floating rear axle. That is stability and strength in its purest form. The two-stage, continuously variable hydrostatic drive provides for outstanding thrust force. And if you are in a hurry, you can drive to the next site at a speed of 40 km/h. Also, you can take your 16-ton trailer along, which corresponds to the maximum trailing load.



High transfer capacities with buckets up to 2.5 m<sup>3</sup>.



Large lifting heights and enormous working ranges. The sliding elements in the telescopic arm are wear-proof!



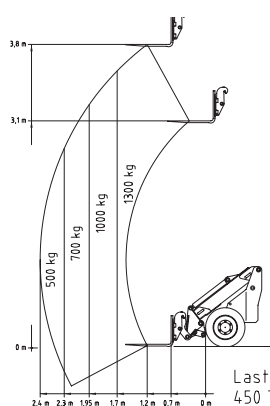
Like all telescopic loaders from Schäffer, the 980 T is a full-fledged wheel loader.



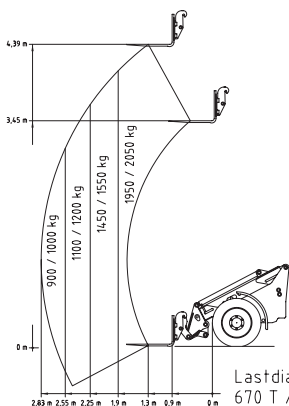
# TECHNICAL DATA

	450 T/TS	670 T	690 T	900 T	930 T	980 T
<b>ENGINE</b>						
Manufacturer	Kubota	Kubota	Kubota	Deutz	Deutz	Deutz
Type of engine	diesel	diesel	Turbo-diesel	Turbo-Diesel	Turbo-Diesel, Ladeluftkühlung	Turbo-Diesel, Ladeluftkühlung
Cylinders	4	4	4	4	4	4
Cooling	water	water	water	Wasser	Wasser	Wasser
Engine capacity [kW/HP]	36/50   45/60	54/75	65/90	75/102	95/130	115/156
Speed [U/min.]	2.800	2.600	2.600	2.200	2.200	2.500
<b>WEIGHTS</b>						
Operating weight with light material bucket [kg]	2.980*	4.820*	4.900*	6.000*	6.600*	8.350*
<b>LOADER CAPACITY</b>						
Bucket content, light material bucket [m³]	0,70	0,90	0,90	1,20	1,20	2,00
Bucket content, earth bucket [m³]	0,50	0,60	3,500	0,80	1,00	1,20
Lifting power [kg]	see diagramm					
Break-out force [daN]	2.200	3.500	3.500	4.100	4.100	4.100
<b>HYDRAULIC SYSTEM</b>						
Conveying capacity/additional hydraulics [l/min.]	60	70	70	80	85	130
Working pressure [bar]	200	200	200	220	220	220
<b>DRIVING HYDRAULICS</b>						
Conveying capacity [l/min.]	126	185	185	198	198	225
Working pressure [bar]	350	450	450	480	480	480
Control	automotive					
Gears	electro hydraulic 2 gears					2x2 electro-hydraulic stages
Drive	hydrostatic all-wheel drive					
<b>TANK CAPACITIES</b>						
Hydraulic tank [litres]	60	50	50	85	95	150
Diesel tank [litres]	60	50	50	95	105	160
<b>ELECTRICAL SYSTEM</b>						
Battery [Ah]	74	100	100	100	100	143
Operating voltage [V]	12	12	12	12	12	12
<b>OTHER</b>						
Driving speed [km/h]	0 – 20	0 – 20, Option: 0 – 30	0 – 20, Option: 0 – 30	0 – 20, Option: 0 – 35	0 – 20, Option: 0 – 35	1st stage: 0 – 20, 2nd stage: 0 – 40
Standard tyres	15.0/55-17 AS	15.0/55-17 AS	425/55 R17 AS	405/70-20, Option: 550/45-22.5	600/40-22.5	700/40-22.5

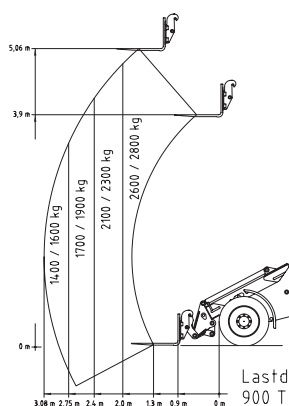
\*Data with cab



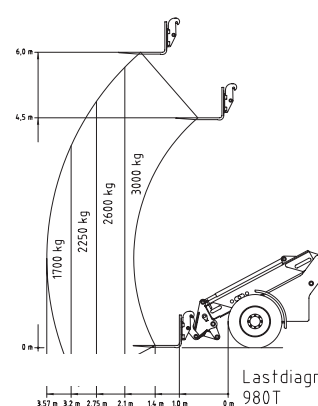
Lastdiagramm  
450 T / 450TS



Lastdiagramm  
670 T / 690 T

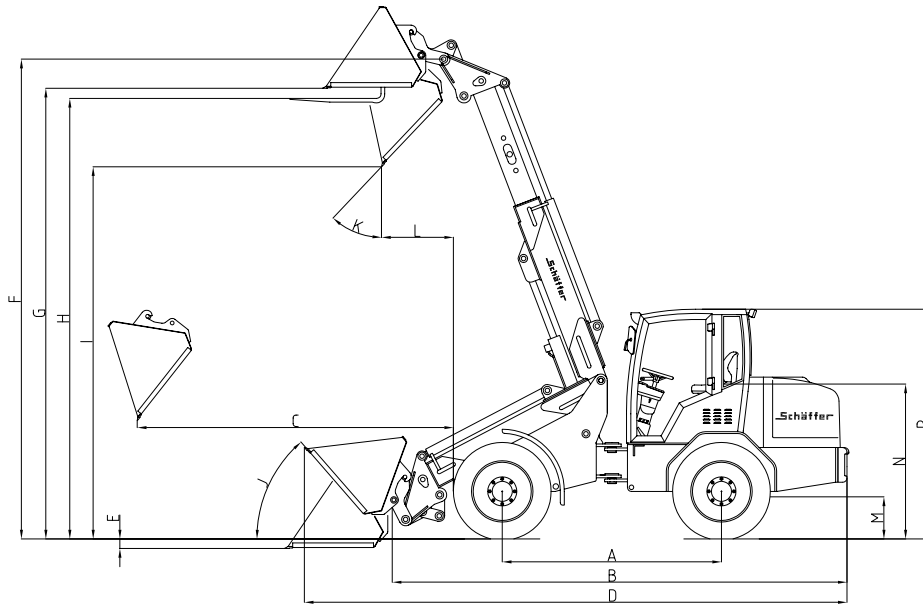


Lastdiagramm  
900 T / 930 T



Lastdiagramm  
980 T

## DIMENSIONS



			450 T	670 T	690 T	900 T	930 T	980 T
<b>A</b>	Axle base	[mm]	1.720	2.100	2.100	2.400	2.400	2.680
<b>B</b>	Chassis length	[mm]	4.070	4.800	4.800	5.060	5.060	5.650
<b>C</b>	Maximum reach	[mm]	1.750	1.570	1.570	2.900	2.900	3.500
<b>D</b>	Total length with standard bucket	[mm]	4.970	5.430	5.430	5.800	5.800	6.400
<b>E</b>	Excavating depth	[mm]	180	150	150	190	190	80
<b>F</b>	Max. bucket pivot point	[mm]	4.040	4.520/4.950	4.520/4.950	5.250	5.250	6.200
<b>G</b>	Max. load over height	[mm]	3.750	4.190	4.190	4.920	4.920	5.880
<b>H</b>	Max. loading height with pallet fork	[mm]	3.800	4.390	4.390	5.060	5.060	6.000
<b>I</b>	Max. dump height	[mm]	3.250	3.530	3.530	4.190	4.190	5.350
<b>J</b>	Crowd back		40°	50°	50°	55°	55°	50°
<b>K</b>	Dump angle		60°	50°	50°	45°	45°	46°
<b>L</b>	Dump range	[mm]	1.250	970	970	730	730	800
<b>M</b>	Ground clearance	[mm]	260	330	330	350	350	410
<b>N</b>	Seat height	[mm]	1.190	1.340	1.340	1.510	1.510	1.700
<b>P</b>	Cab height	[mm]	2.150	2.320	2.320	2.450	2.450	2.695
	Total width	[mm]	1.270 - 1.600	1.570 - 1.800	1.570 - 1.800	1.850 - 2.080	1.850 - 2.080	2.320
	Track arc inside	[mm]	1.410	1.750	1.750	2.080	2.080	1.700
	Track arc outside	[mm]	2.780	9.325	9.325	3.930	3.930	4.000





The processes and methods with which SCHÄFFER loaders are developed, built, and serviced is one of a kind. The difference lies in our 50 years of experience. We think first about the operator, for we want to make his work safer, more comfortable, and more profitable as well. To this end, we employ the most modern development and production technologies at our plant in Erwitte, Germany. Lastly, however, it is our associates who work with our customers to continuously develop new solutions. Long years of commitment to the company combined with an insatiable researching spirit form the basis for our exceptional competence and our worldwide success.

The name SCHÄFFER LADER stands for more than one-of-a-kind product quality. It also stands for safety and optimal service, which we guarantee not only in Germany, but also in Europe and around the globe.

The purchase of a SCHÄFFER loader is the beginning of a long-term relationship. Only original replacement parts will allow your machine to remain a 100 % true SCHÄFFER over the years. Only then will it guarantee the reliability which you require and rightfully expect. We offer you and our service partners a 24 hour delivery service – 7 days a week, 365 days a year. And that, too, means ...

*made by SCHÄFFER*

SCHÄFFER offers you a product line-up with over 40 different models, each of which can be optimally adapted to your requirements. The possible applications for our loaders are numerous: in agriculture or construction, in horticulture or landscaping, in industry and trade, in horse husbandry or in warehousing – SCHÄFFER is always your first choice.



# Schaeffer Lader

Your Dealer:

SCHÄFFER MASCHINENFABRIK GMBH  
Postfach 10 67 | D-59597 Erwitte  
Phone +49 02943 9709-0  
Fax +49 02943 9709-50  
info@schaeffler-lader.de  
www.schaeffler-lader.de